



*Welcome to  
Wolds Edge*

**THE PERFECT, PEACEFUL, HOLIDAY HIDEAWAY  
IN THE YORKSHIRE WOLDS.**

WOLDS  EDGE  
Holiday Lodges



Tucked away at the foot of the Yorkshire Wolds, on the edge of the small, picturesque village of Bishop Wilton and only 12 miles from the historic city of York, we have created a tranquil and peaceful haven for you. Nestled amongst wildlife are seven beautifully designed lodges, two lovingly hand crafted Snug Huts and our unique Treehouse.

Wolds Edge Holiday Lodges offer a real taste of Yorkshire village life. The area's peaceful location makes it the number one choice for discovering the hidden gems of the Wolds and is the perfect getaway for couples, families or friends seeking sanctuary on their holiday. With fantastic facilities for cyclists, walkers and holidaymakers you can explore the culture, coast and countryside or just relax and unwind.

Our award winning lodges are beautifully designed, tastefully furnished and are wonderfully spacious (and there's free wi-fi should you need it!) Each lodge is immaculately presented and has its own charming setting within Wolds Edge, where you can watch the wildlife or simply enjoy al fresco dining on the verandas.

Collect fresh eggs for breakfast from our free range chickens or borrow our badminton rackets, tents, den building and bird watching equipment and enjoy the beautiful outdoors. Hire bikes from us and see the countryside in a different light, exploring the bridleways and country lanes in the Yorkshire Wolds.

We offer weekend short breaks and mid-week breaks all year round. We are closed for arrivals on Sunday and all our lodges are non-smoking.



*"We have just come back home after a lovely weekend away, staying at Cowdale snug hut! It was absolutely gorgeous and catered for our every need. The bathroom facilities were excellent and so close to the hut. It is placed in such a peaceful setting, and it was so lovely to hear all the birds! Would highly recommend and we would love to come back again."*



## The Snug Huts - Cowdale and Springdale

**SLEEPS 3** (cot available on request, sorry no dogs)

Our Snug Huts offer luxurious glamping and includes a welcome breakfast basket for the first morning, bedding and towels. Each hut has the luxury of its own private shower room with toilet just a few yards away. These perfectly sized huts are ideal for those looking for comfort and flexibility with just a one or two night stay, where you can bbq under the stars or just curl up in front of the wood burner.

### INSIDE YOU WILL FIND EVERYTHING YOU NEED TO MAKE YOUR STAY SIMPLY WONDERFUL

- Microwave, kettle, cutlery, crockery and glasses
- TV with DVD player (DVDs to borrow)
- Toaster with egg cooker and a mini fridge
- Torch
- Woodburner (Logs available to buy)
- Charcoal BBQ (please bring your own charcoal)

There is also access to a washing machine, tumble dryer, wellie boot store and secure bike store.



*"We stayed in Fairy Dale Lodge for a weekend and have to say it's an absolutely brilliant place to stay, so wonderfully quiet and relaxing. We were even visited by the free range chickens as we were packing up! Just what we needed and wanted. Would gladly go back anytime."*



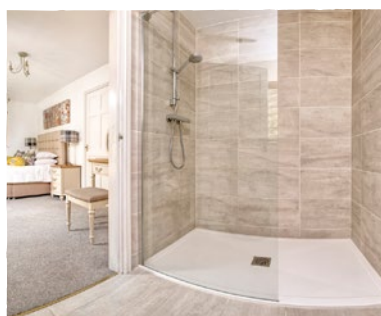
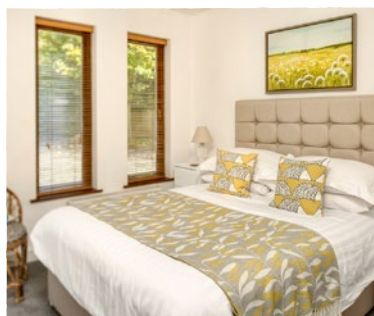
## *Fairydale, Deepdale and Rabbitdale*

**2 BEDROOM LODGES THAT SLEEP 4** (cot available on request, sorry no dogs)

These lodges are ideal for friends and families, giving you the perfect base to unwind. With a two night minimum stay, off-peak, they offer that home from home feeling. Both bedrooms have en suite and are perfect for two couples to enjoy a walking or cycling break in our beautiful countryside, or families to spend time together. With stunning views across the Yorkshire countryside, guests can relax on the wooden deck with a morning cup of coffee, or enjoy an alfresco meal while listening to the birds. In Deepdale and Fairydale, you can even catch them nesting in spring as our bird box camera feeds through to your television!

### **INSIDE YOU WILL FIND EVERYTHING YOU NEED TO MAKE YOUR STAY SIMPLY WONDERFUL**

- 1 double with king size bed and 1 twin bedroom - both bedrooms have en-suite with shower above the bath
- All linen and towels provided.
- Well equipped kitchen with microwave oven, dishwasher, fridge/freezer and washing machine.
- TV



*"We recently returned from another wonderful weekend at Wolds Edge, staying in Kingfisher Lodge, we had a fantastic, relaxing time. The lodge is well presented and comfortable. My little dog was well provided for with a bed, feeding bowls, towel & treats waiting for him. I cannot praise Ruth and her team enough for providing such a wonderful experience."*



## Kingfisher Lodge

**SLEEPS 4** (Adults only, not available for group booking with other lodges)

Kingfisher is set along a small stream and perfect for guests looking for a quiet retreat. With two bedrooms, two bathrooms, kitchen and lounge - it caters for all your needs. Step outside onto the private veranda, which overlooks the stream that feeds the mill pond and there is an abundance of birds and wildlife, you may even be lucky enough to see one of the kingfishers fishing from the bridge. Unwind in this peaceful sanctuary or enjoy the many wonderful walks we have to offer in our beautiful countryside.

### INSIDE YOU WILL FIND EVERYTHING YOU NEED TO MAKE YOUR STAY SIMPLY WONDERFUL

- 1 king size bedroom with en suite walk in shower and 1 double bedroom.
- Bathroom with shower over the bath.
- All linen and towels provided.
- Well equipped kitchen with microwave oven, dishwasher and fridge/freezer.
- TV



*"We spent a week staying at Wolds Edge lodges. We arrived to a really friendly welcome from the owners before heading to our lodge. As we arrived at the lodge we were marvelling at how peaceful/ tranquil the whole area was, with the air filled with birdsong and a quiet atmosphere."*

## Mill Pond Lodge



**SLEEPS 5** (Family friendly)

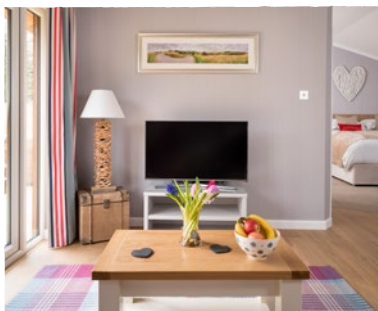
Situated on the side of a wildlife pond, a haven of birds and wildlife surrounds you at Mill Pond Lodge and with great walks on your doorstep adventure is never far away. Ideal for a secluded friends or family holiday, this lodge has two bedrooms, two bathrooms, kitchen and lounge. After a busy day enjoying the city, coast or countryside, relax on the decking overlooking our tranquil pond or snuggle up in front of the log burner.

### INSIDE YOU WILL FIND EVERYTHING YOU NEED TO MAKE YOUR STAY SIMPLY WONDERFUL

- 1 double bedroom with en suite walk in shower and 1 twin bedroom which also includes a child's high bed.
- Bathroom with shower over the bath.
- All linen and towels provided.
- Well equipped kitchen with microwave, oven, washing machine, dishwasher, and fridge/freezer.
- TV
- Dining table extends to seat 12.



*"A beautiful lodge. Very high standard fittings and interior. Great hot tub made even better since it snowed whilst we were there. Fantastic attention to detail of the smaller things in the lodge. Well equipped kitchen. Quiet country surroundings. The owners were very accommodating of our arrival time and could not do enough to make our stay extra special. One of the nicest places we have stayed."*



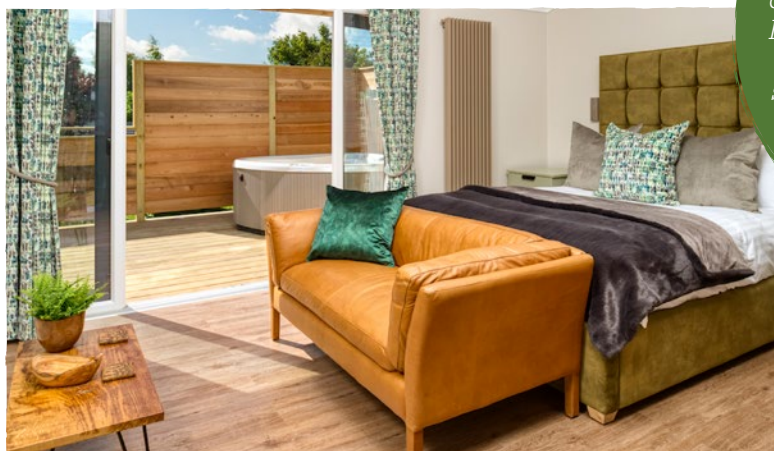
## Lodges with hot tubs - Honeydale & Lilydale

**SLEEPS 2** Adults only (must be over 18)  
Infants in cots welcome, sorry no dogs.

Our Honeydale and Lilydale lodges are perfect for that romantic getaway. Whether it's a honeymoon break, special anniversary or simply just to escape for the weekend, our luxury lodges will give you the ideal hide-away. With one beautifully decorated bedroom, super kingsize bed, deep luxurious bath as well as a walk in shower in its spacious bathroom area, it offers everything you need. The open plan living space makes these lodges feel beautifully light and outside on the wooden deck you have your very own hot tub.

### INSIDE YOU WILL FIND EVERYTHING YOU NEED TO MAKE YOUR STAY SIMPLY WONDERFUL

- All linen and towels provided
- Well equipped kitchen with microwave, oven, dishwasher and fridge/freezer.
- 42" TV and second TV in the bedroom.
- Bath robes and slippers provided.



*"We have had the most wonderful time in the Treehouse. Everything we could possibly have wanted is here! We have had three days living amongst nature in five star luxury! Tranquil, peaceful and truly wonderful. We will never, ever forget this little break."*

## Treehouse

**SLEEPS 2** Adults only (must be over 18)

Surrounded by the beauty of nature and jam packed with luxurious creature comforts, the Treehouse is a secluded sanctuary for honeymoons, anniversary celebration, or simply just to escape the trappings of everyday life in your lodge amongst the leaves. Inside is a beautifully designed and decorated open plan living and sleeping space. A luxurious king size bed sits at one end of the room which leads to a sleek en-suite with walk in shower. In addition to the large flatscreen TV there is also the hot tub outside on your own elevated private decked area which offers great views of the surrounding countryside.

**TOP TIP:** We would recommend small bags or suitcases when packing and flat shoes as this will make the ascend to your Treehouse retreat much easier.

### INSIDE YOU WILL FIND EVERYTHING YOU NEED TO MAKE YOUR STAY SIMPLY WONDERFUL

- All linen and towels provided.
- Bath robes and slippers provided.
- TV with DVD player.
- No BBQ's allowed
- Well equipped kitchen with microwave oven, dishwasher and fridge.
- Sorry no dogs



## *Out and About*

---

Wolds Edge is perfectly situated for getting out and about. You can visit the historic city of York, enjoy the beautiful Yorkshire coastline and explore the wonderful countryside.

The area is popular with walkers and cyclist and there are many magnificent routes (including the Chalkland Way and Minter Way) on our doorstep or you can simply wander along one of the many local footpaths. You can also access a number of local and national bike rides where you can cycle along quite country lanes that criss-cross the rolling chalk hills and enjoy wonderful views, wildlife, historic places and pretty villages.

**OUR WEBSITE IS FULL OF GREAT IDEAS FOR THINGS TO DO AND SEE WHILE  
YOU ARE WITH US – [WOLDSEDGE.CO.UK/ADVENTURES](http://WOLDSEDGE.CO.UK/ADVENTURES)**

**WE LOOK FORWARD TO WELCOMING YOU SOON.**